



**CROWNE**  
REAL ESTATE



### 107 Blackall Street Basin Pocket QLD

3 1 2

Welcome to 107 Blackall Street in the quiet suburb of Basin Pocket! Located close to all amenities with convenience store, bakery, butcher, and Riverheart parklands at your fingertips and only minutes to schools and Ipswich CBD, this appealing property has much to offer, and with nothing to do but move in, what more could you ask for?

Set on steel adjustable stumps, the home has been fully enclosed underneath and has plenty of space for a workshop, lock up car accommodation for two and drive through access to the fully fenced back yard.

Upstairs has lovely hardwood floors throughout and consists of a combined lounge and dining room with split system air conditioning leading through to the light filled kitchen with dishwasher, upright stove, corner pantry and plenty of bench and cupboard space. A good sized rear

**Type** : House  
**Price** : \$ 496,500  
**Land Size** : 607 sqm  
**View** : <https://www.crownrealestate.com.au/8017722>



**Mike Jones**  
0400 515 422



**Kirsty Dutney Jones**  
07 3288 8411

[For full version visit the website](https://www.crownrealestate.com.au)

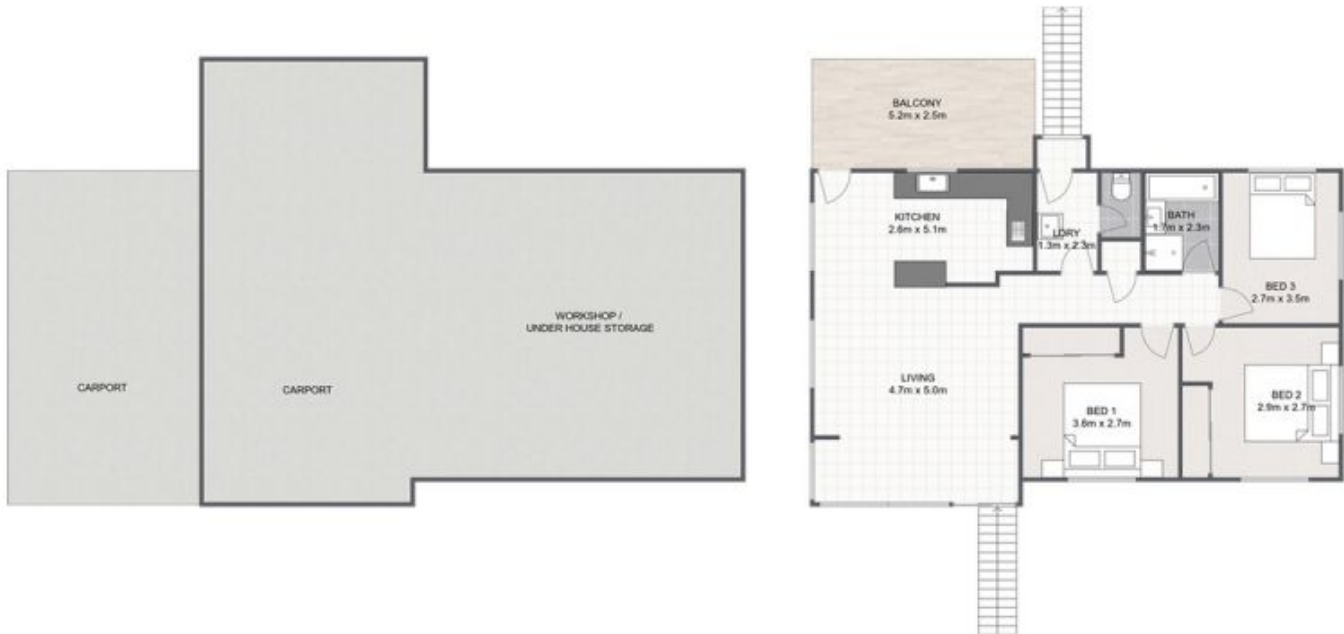
<https://www.crownrealestate.com.au>

07 32888411

# 107 Blackall St, Basin Pocket



3 1 2 607m<sup>2</sup>   
Total approx floor area 108m<sup>2</sup>



Whilst every attempt has been made to ensure the accuracy of the floor plan contained here, measurements of doors, windows, rooms and any other item are approximate and no responsibility is taken for any error, omission, or misstatement. This plan is for illustrative purposes only and should only be used as such by any prospective purchaser.