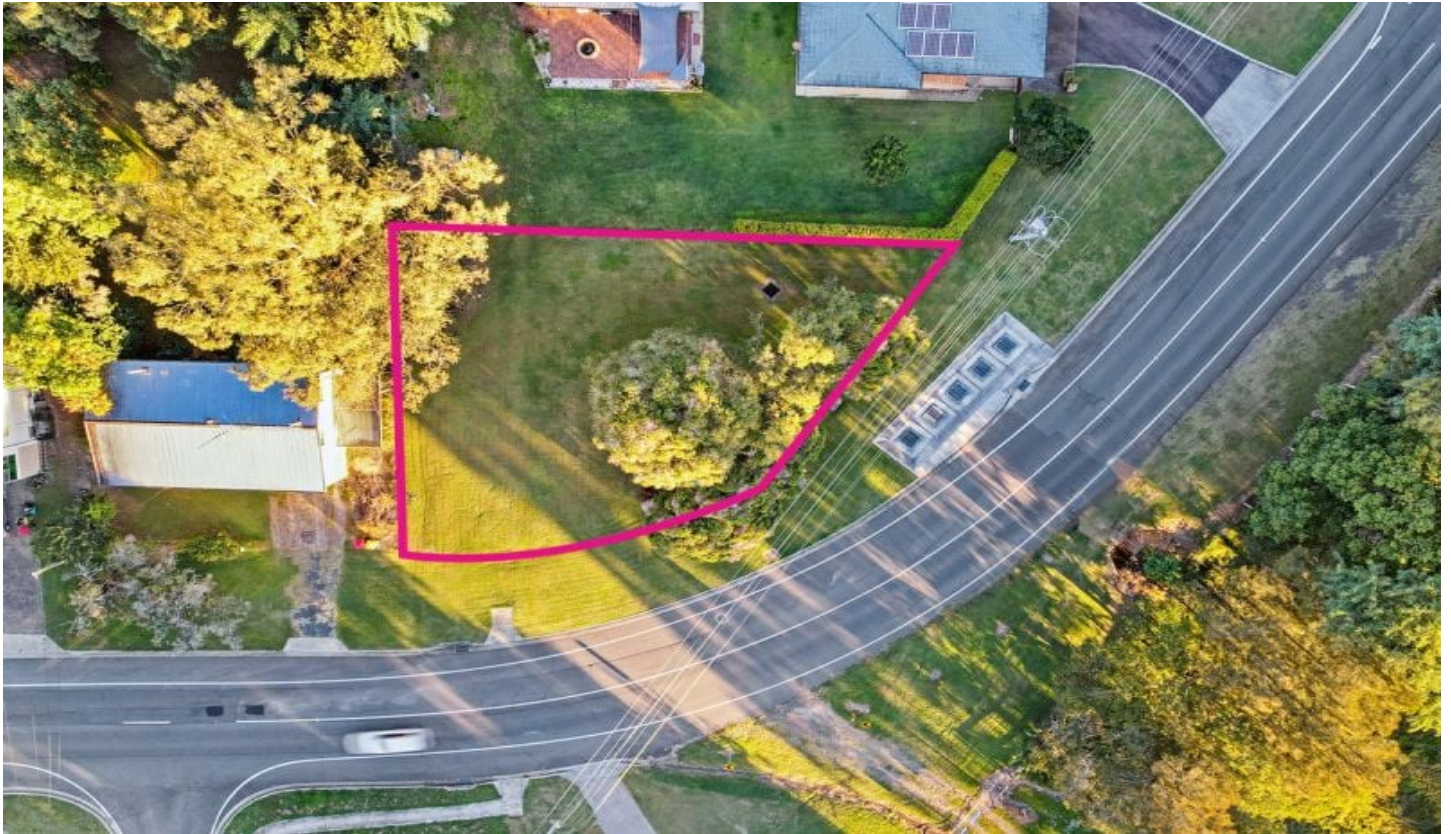




CROWNE

REAL ESTATE



32 Berry Street Churchill QLD

With land sizes in the new estates only getting smaller, this is a rare opportunity to purchase a generous 714m² block in the heart of Churchill.

This spacious and leafy corner block offers ample space to build the home of your dreams while still having enough space for a shed, pool or just room for the pets and kids to run free. It's ideally situated in a location where you can raise your family and be close to all the amenities Churchill has to offer including schools, shops, parks, Ipswich CBD, and the University!

- * Large and leafy 714m² block
- * Dimensions - 29.5m x 20.9m x 24.8m x 36.8m
- * Rare opportunity to secure a block of land only minutes to the CBD
- * A location that is second to none!

Price : \$279,000
Land Size : 714 sqm
View : <https://www.crownrealestate.com.au/8014979>



Geoff Paulsen
0413 394 386



Ally Briscoe
0411 161 836